

NOW AVAILABLE  
**FOR LEASE**



**[UN]DISCOVERED**

**5255 HEATHER STREET**  
VANCOUVER





## 5255 Heather Street [FOR LEASE]

The Heather Street Lands represent a unique opportunity to lease up to 235,000 square feet, within two buildings, on approximately 9.5 acres of land in the heart of Vancouver.

### PROPERTY DETAILS

#### Leasable Space

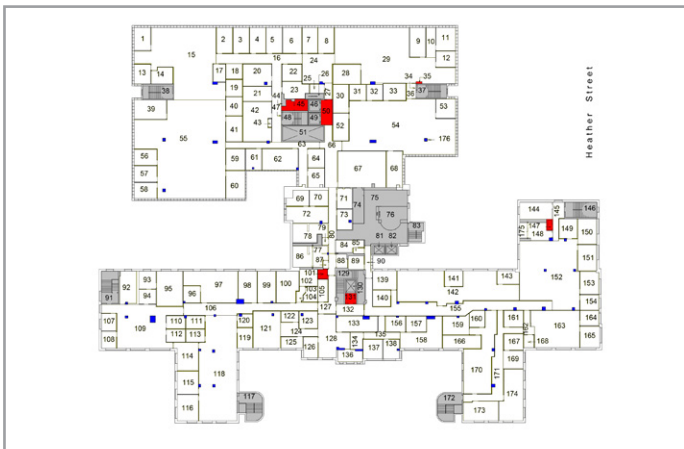
- Up to 130,000 sf available
- Three-stories, plus basement
- Large and efficient floor plates located in Vancouver's sought after West Side
- Commercial kitchen/commissary equipment and infrastructure in place
- Viewing room/theatre
- Large executive offices on the 3<sup>rd</sup> floor, several of which include ensuite bathrooms
- Loading bay and storage space
- Secured underground parkade
- Available immediately

- **Zoning**  
CD-1 (52A) – General Office Use
- **Size**  
10,000 sf – 130,000 sf
- **Extremely Competitive Asking Rate**  
Contact Listing Agents
- **Term Length**  
Flexible lease terms available

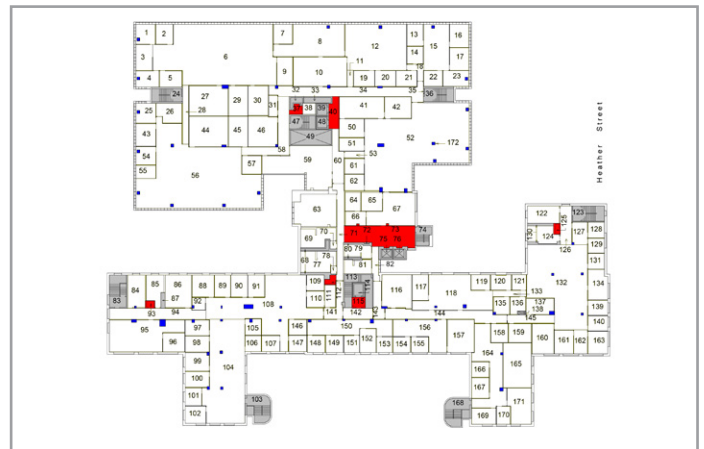
[HIDDEN] IN  
PLAIN SIGHT



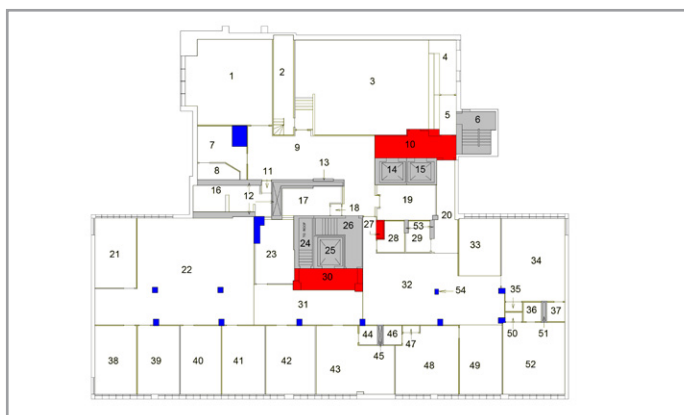
# UNIQUE PROPERTY IN THE [HEART OF THE CITY]



▲ [ 1st Floor ] [ 3rd Floor ] ▼



▲ [ 2nd Floor ] [ Basement ] ▼



5255 Heather Street  
**[FOR LEASE]**

FOR LEASING INFORMATION:



Mark Chambers\*  
+1 604 998 6005  
mark.chambers@am.jll.com

Andrew Astles  
+1 604 998 6045  
andrew.astles@am.jll.com

Scott MacDonald  
+1 604 998 6020  
scott.macdonald@am.jll.com

Jones Lang LaSalle Real Estate Services, Inc.  
14th Floor, 355 Burrard Street, Vancouver, BC, V6C 2G6 | Tel: +1 604 998 6001



CANADA LANDS COMPANY  
SOCIÉTÉ IMMOBILIÈRE DU CANADA

The Heather Street Lands were acquired on September 30, 2014 by the Musqueam, Squamish, and Tsleil-Waututh Nations ("the Nations") and Canada Lands Company in an historic joint venture. Acting as Project Manager, Canada Lands Company is responsible for managing the properties on behalf of the joint venture.

Canada Lands Company is a self-financing, federal, non-agent commercial Crown corporation. Canada Lands Company operates at arm's-length from the government in acquiring properties from various federal departments, agencies and

Crown corporations. Canada Lands Company optimizes the financial and community value of strategic government properties that are no longer needed for program purposes. Canada Lands Company receives no government appropriations.

Since its reactivation in 1995, Canada Lands Company has achieved success in its many endeavours across the country, including contributions of over \$1-billion to the Government of Canada. The company also holds and operates certain properties, such as the CN Tower and Downsview Park in Toronto, and the Old Port of Montréal.

STEP INTO ONE OF THE LAST REMAINING  
**[BLOCKS OF SPACE IN THE CITY]**